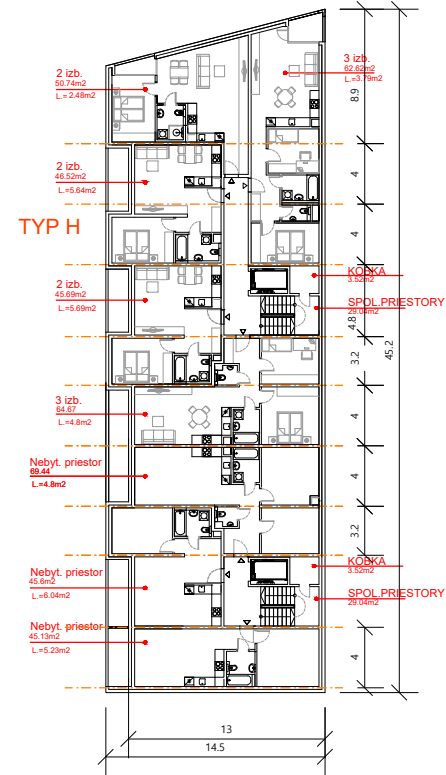
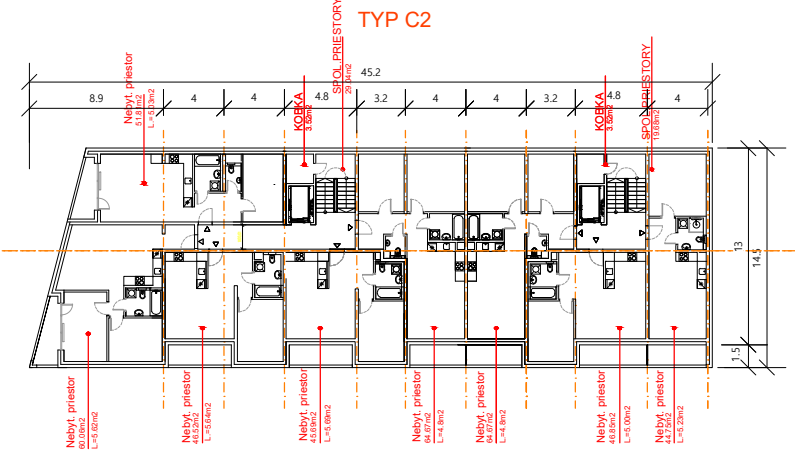
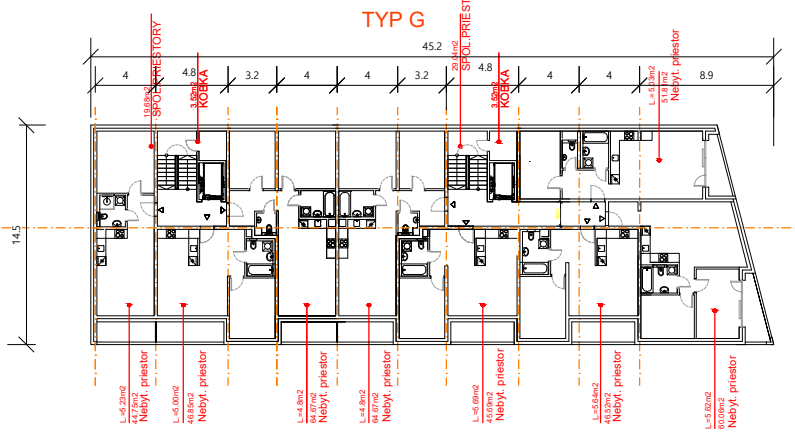
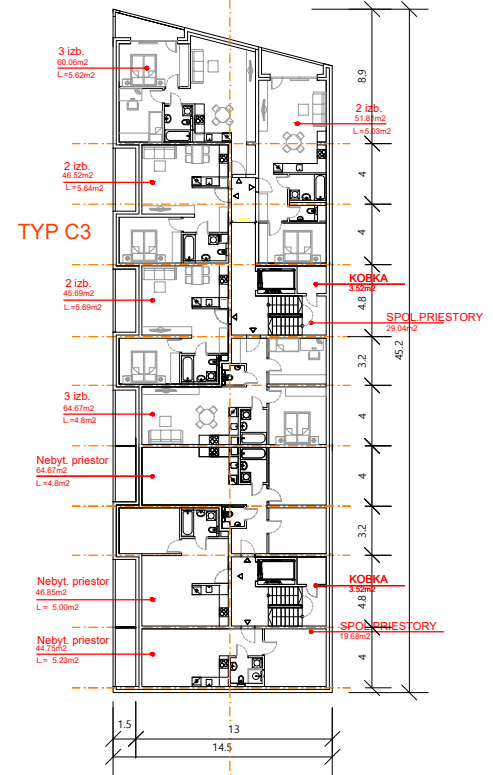


SO103



SO107



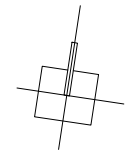
Územný plán zóny

Obytná zóna Trnava - Prúdy (lokalita I.b - I.c)

D. Príloha:
 Stavebné objekty SO 101 - SO 108 s podrobnosťou nahrádzajúcou územné konanie

INVESTOR: Terra Trnavia, s.r.o., Blagoevova 28
 Bratislava 851 01
 SPRACOVATEL: cakov + partners, Ventúrska 5
 Bratislava 811 01

AUTORI: Ing. arch. Kalin Čakov, Ing. arch. Metodij Monev, Ing. arch. Ján Obošek,
 Ing. arch. Michal Kyselica, Ing. arch. Mário Chovan, Ing. Tomáš Fojtík,
 Ing. arch. Diana Michnová, Ing. arch. Barbora Mrmíková



Pôdorys 2. a 3. nadzemného podlažia
 SO 103, SO 107
 M 1:500